

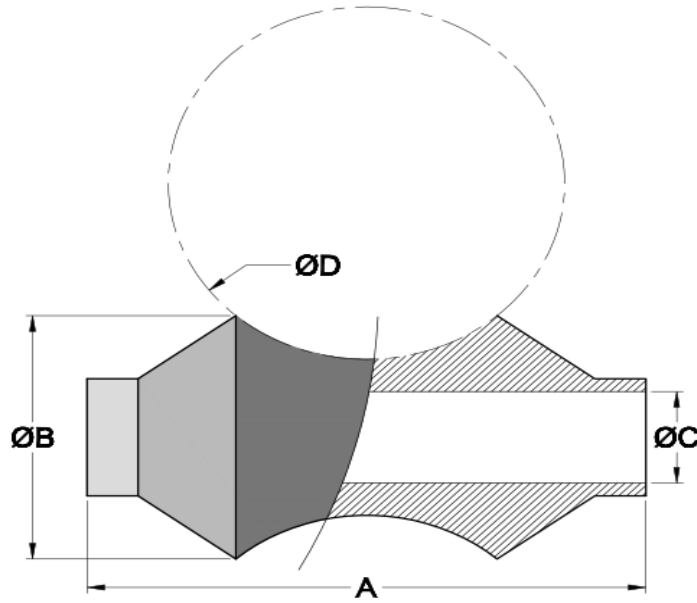


**CARMIOLE INDUSTRIAL S.A.**  
 200 Norte de F.A.C.O.  
 San José, Costa Rica  
 Tel. (506) 2240-3836 Fax. (506) 2297-0179  
 carm.ioindustrial@ice.co.cr  
 www.carm.ioindustrial.com

CI 400

**RODILLO PARA SOPORTE DE TUBERIAS**

Utilizados para la fabricación de soportes de tuberías en donde se anticipa movimientos debidos a expansión térmica.



TODAS LAS DIMENSIONES MANEJAN TOLERANCIAS Y PODRIAN CAMBIAR SIN PREVAVISO

| $\phi$ D<br>mm (pulg) | MATERIAL     | A<br>mm (pulg)   | $\phi$ B<br>mm (pulg) | $\phi$ C<br>mm (pulg) |
|-----------------------|--------------|------------------|-----------------------|-----------------------|
| 50 (2")               | A = aluminio | 71.5 (2-13/16")  | 35 (1-3/8")           | 12.7 (1/2")           |
| 63.5 (2-1/2")         |              | 84.0 (3-5/16")   | 38.1 (1-1/2")         | 12.7 (1/2")           |
| 75 (3")               |              | 100.0 (3-15/16") | 41.3 (1-5/8")         | 12.7 (1/2")           |
| 100 (4")              |              | 128.5 (5-1/16")  | 47.6 (1-7/8")         | 15.9 (5/8")           |
| 127 (5")              |              | 155.5 (6-1/8")   | 61.9 (2-7/16")        | 15.9 (5/8")           |
| 150 (6")              |              | 179.4 (7-1/16")  | 75.0 (3")             | 15.9 (5/8")           |
| 200 (8")              |              | 232.0 (9-1/8")   | 82 (3-1/4")           | 15.9 (5/8")           |
| 250 (10")             |              | 266.0 (10-1/2")  | 113 (4-7/16")         | 15.9 (5/8")           |

ECUATORIANA

ULTIMA ACTUALIZACION: 12-05-16

FECHA: 27-04-09

APROBADO POR: J.A.C.

REVISADO POR: J.A.C.

DE: J.A.C.

DI: J.A.C.